



## News Sheet – October 2017

### Diary Dates – October 2017

2 <sup>nd</sup>	School Closed – Staff Training
3 <sup>rd</sup>	Gaelic Blitz – St John's, Eglis
5 <sup>th</sup>	Young Enterprise - Yr 5
9 <sup>th</sup> – 13 <sup>th</sup>	Book Fair
11 <sup>th</sup>	Yr 5 – 7 Online Safety Talks
18 <sup>th</sup>	Young Enterprise – Yr 4
19 <sup>th</sup>	Dental Nurse in LSC
23 <sup>rd</sup> - 27 <sup>th</sup>	Parent/Teacher Meetings – school finishes at 1pm for all pupils
26 <sup>th</sup>	Flu Vaccination
30 <sup>th</sup>	Half Term Week begins

### Advance Dates

We aim to work in partnership with parents and, with this in mind; we have arranged as many dates as possible for the school year to give parents as much notice as possible. These can be found on the Calendar on our website [www.ballyoranps.com](http://www.ballyoranps.com).

### School Closure: October 2017

Please note that school will be closed on Monday 2<sup>nd</sup> October for Staff Training and from Monday 30<sup>th</sup> October to Friday 3<sup>rd</sup> November 2017 for Half Term.

### Book Fair

This will take place from Monday 9<sup>th</sup> – Friday 13<sup>th</sup> October 2017. Please see flyer which will be sent home next Tuesday. Please give this your support.

### First Aid

Our 4 First Aiders are:

- Mrs N Fusco (Co-ordinator)
- Mrs E Mackle
- Mr R Hendron
- Mrs L Baxter

### Fizzy Drinks

A reminder that as part of our Healthy Schools Policy, we do not permit pupils to bring fizzy drinks into school.

### Healthy Breaks

Nursery to Year 2 get a healthy snack provided by the school, Year 3 – 7 must bring in their own healthy snack. To help parents we have created a table of suitable and non-suitable healthy break snacks:

Suitable healthy break snacks	Not allowed at break
Pieces of fresh fruit	Any type of confectionery, eg chocolate products and sweets
Fruit pots of sliced or chopped fresh fruit	Crisps and crisp-like products such as tortilla chips, potato sticks, corn chips, prawn crackers, puff crackers
Canned fruit in natural juice	Cakes, buns or pastries
Salad pots	Cereal or fruit bars
Raw vegetables such as tomatoes, carrots, celery, peppers and cucumber	All biscuits
Bread, pancakes or scones with a thin spread of margarine	Fizzy drinks
Breadsticks or crackers with cheese	Dried fruit that has been sugared or coated in

	yogurt or chocolate
Sandwiches, bagels, baguettes, pitta bread, tortilla wraps or rolls	Pretzels
Yogurts	Nuts

### Lunchbox Leaflet

We encourage parents of pupils who take a Packed Lunch, to ensure it is healthy. Leaflets are available from the Office.

### Free School Meals

Are you aware that many people in Northern Ireland who are entitled to Free School Meals are not claiming them?

If you can answer 'Yes' to any of the following questions, you **may** be entitled to Free School Meals:

Are you in receipt of:

- Income Support?
- Income-Based Jobseeker's Allowance?
- Income-Related Employment and Support Allowance?
- Guarantee Element of State Pension Credit?

If you are **not** receiving one of the above benefits

- Are you in receipt of **Child Tax Credit** or **Working Tax Credit** and have an annual taxable income of £16,190 or less?
- Are you an Asylum Seeker supported by the Home Office National Asylum Support Service (NASS)?

If you have answered 'Yes' to any of these questions and are not in receipt of Free School Meals, please contact Mrs Mayers in the office for an Application Form or visit the school website 'Parents' and 'Apply for free School Meals/Uniform Allowance'.

### Flu Vaccine

The Department of Health has decided that all Year 1 – 7 pupils will be offered the Flu Vaccine again this year. This will be by way of a nasal spray and will be administered in school on 26<sup>th</sup> October 2017. Parents will receive Consent Forms for this which I ask you to return promptly.

### After School Clubs

The school continues to offer a varied selection of Extra Curricular Activities to its pupils. We believe that these are an important part of your child's educational experience at Primary School. We would encourage every pupil to attend at least one Club year term. Please see the Club List on page 6. A reminder that all Clubs which begin at 2.00pm finish at 3.00pm. Those Clubs which start at 3.00pm finish at 4.00pm. Please ensure your child is collected promptly after Clubs.

### School Uniform

I want to say a big thank you to all our parents for ensuring that your children are in full school uniform every day. Our pupils look so smart in the uniform and we ask that you ensure that these high standards are maintained all year. A reminder that replacement ties and PE bags can be purchased from the office for £3 each.

Please note that hooded tops (hoodies) are not permitted in school.

### Parent/Teacher Meetings

These will take place from 23<sup>rd</sup> – 27<sup>th</sup> October 2017 for all parents. To facilitate these, school will close at 1.00pm each day. As these meetings are a vital part of our home/school partnership we would ask that you make the effort to attend. As last year, one letter will be going out to the eldest pupil in each family. We would ask that you complete the reply to include all family members and return it to school with the eldest pupil. A reminder that there will be no after school clubs during this week.

### House System

The school continues to operate the House Competition. All pupils have been placed into one of three houses:

Bann, Lagan and Foyle

Points are awarded to pupils for a range of things, (e.g. good manners) and the points are displayed in the Assembly Hall each week with a monthly House Cup presented to the House with the most points.

Congratulations to the following Yr 6 and 7 pupils who have been elected as Captain and Vice Captains this year.

House	Captain	Vice-Captain
Bann	Julia Pawelczyk	Ellie McNeice
Foyle	Julia Oliveira	Djason Domingos
Lagan	Kassie Blanton	Molly Davies

### Morning and Afternoon Arrangements

A reminder that all pupils must be dropped off outside school in the mornings. We ask that parents do not enter the school building. This is to ensure the smooth operation of the school first thing in the morning. Unfortunately it will not be possible for you to speak to your child's teacher in the morning as they are busy preparing and supervising. If you have an urgent message, please go to the Office. A reminder that supervision does not begin until 8.45am, therefore your child/children should not be on the premises before this unless they are attending Breakfast Club.

You are reminded to wait outside the red gate at home time until your child is dismissed by their teacher. We ask that parents do not come in to remove their child/children or call them out until they have been dismissed.

Thank you to the vast majority of parents who respect the above requests.

### Car Parks/Parking

A reminder that the car parks must not be used for dropping off or collecting pupils. Parents and pupils are asked to refrain from entering the car park for Health and Safety reasons. Again, thank you to the vast majority of parents who respect this. Traffic congestion continues to be a problem in Ballyoran Park and we would ask that you respect local residents by parking sensibly. Please also respect other drivers and pupils. No-one should park on the yellow hazard lines or block the gates.

### European Day of Languages

On Tuesday 26<sup>th</sup> September we celebrated European Day of Languages. Children spoke in lots of different languages and had fun learning new songs and games.

### School Attendance – Every School Day Counts

Every single day a child is absent from school equates to a day of lost learning. Sometimes attendance percentages can be misleading – as a whole school in 2016/17 we had an average attendance of 92.2%. From the Department of Education guidance detailed below you can see that this falls into the 'Poor' category. As a whole school we would like your cooperation in improving our rate of attendance and in turn reducing the days of lost learning. Form your child's summer report you will find the rate of attendance for 2016/17 and make comparisons with the table below. Please note that rates of attendance are reviewed monthly with the Educational Welfare Office (EWO) and those children falling below 85% are automatically referred to the EWO for intervention. Thank you for your help in this matter. The Department of Education booklet '**School Attendance Matters - A Parent's Guide**' is available on the school website and from the Office.

100% Attendance	0 Days Missed	Excellent
95% Attendance	9 Days of Absence 1 Week and 4 Days of Learning Missed	Satisfactory
90% Attendance	19 Days of Absence 3 Weeks and 4 Days of Learning Missed	Poor
85% Attendance	28 Days Absence 5 Weeks and 3 Days of Learning Missed	Very Poor
80% Attendance	38 Days of Absence 7 Weeks and 3 days of Learning Missed	Unacceptable
75% Attendance	46 Days of Absence 9 Weeks and 1 Day of Learning Missed	Unacceptable

Due to Department of Education Guidelines, a present mark can only be given if a pupil is in school.

Just as Attendance is important, Punctuality is also very important. School begins at 8.55am therefore; pupils should be in school when the 8.55am bell rings. We would ask all parents to help ensure this is

the case. If pupils are late, the class is disrupted and valuable teaching time is lost. **Please note that Pupils arriving in class after the 9.00am bell will be marked as late. If a pupil is late twice in one week, you will receive a letter from the teacher. If this happens again in the same half-term, you will receive a second letter and be referred to the Principal.**

### **School Website**

Please keep up to date with what is going on in school by visiting our website on [www.ballyoranps.com](http://www.ballyoranps.com)

### **Parents and Friends**

The Annual General Meeting of the Parents and Friends of Ballyoran Primary School was held on Tuesday 26<sup>th</sup> September 2017. More parents and friends are urgently needed to help with organising events this year. If you are interested, please speak to Mrs Mackle.

### **Fair Processing Notice**

Your child, as part of their education at Ballyoran Primary School, will have access to a range of electronic resources designed to enhance their learning experience and allow them to collaborate with their peers. In order to facilitate this, the School may need to share some limited personal information with the relevant Education Authority and the Department of Education. This will allow user accounts to be set-up and managed, enabling services to be integrated. Any data sharing is kept to a minimum and when your child leaves the School the information will be permanently deleted from such systems. At times, the School may also share personal information with the Education Authority to support the direct delivery of educational services. Examples include the Authority's Special Education and Educational Psychology Services. All sharing will be conducted under the provisions of the Data Protection Act 1998. If you would like to know more, please feel free to contact the Principal.

### **Money Reminder**

Thank you to everyone who sends all money into school in an envelope. Parents are reminded that teachers will no longer be accepting loose coins. All money coming into school must be the correct amount, in an envelope labelled with the child's name, the amount and what it is for. Also where there are more than one pupil in the school, a separate envelope should be sent for each child. This will ensure that teachers have more time for teaching. Thank you for your co-operation on this matter.

### **Nut Free School**

Ballyoran Primary School continues to be a nut free school. We would ask that no nut products are sent into school. Thank you for your co-operation on this matter.

### **Food Allergies**

Legislation means that the school kitchen must be aware of any pupils with food allergies. Whilst most special dietary requirements and food allergies should have been made known to the school already through the Medical Register forms, it is of vital importance to inform us if you have not done so already or if your child becomes allergic to something during the school year. Our school kitchen will in turn make appropriate adjustments to their menus.

### **Daily Mile**

As you have previously been notified all our pupils take part in the 'Daily Mile' initiative in conjunction with the Southern Health Trust. This includes 15 minutes of walking or running each day, over and above normal PE lessons. Further information is available on the school website.

### **Gum Shields**

Please note that it is school policy and GAA policy that everyone involved in Gaelic Football must wear a gum shield to protect their teeth and gums. All pupils attending after school Gaelic on Mondays and playing in matches and blitzes must wear a gum shield or they will not be able to take part.

### **PQH**

Congratulation to Mrs Brown who has successfully completed the Professional Qualification for Headship training. This qualification is well deserved and is the result of much hard work and commitment on Mrs Brown's part over this past year.

### **Year 5 Fire Service Talk**

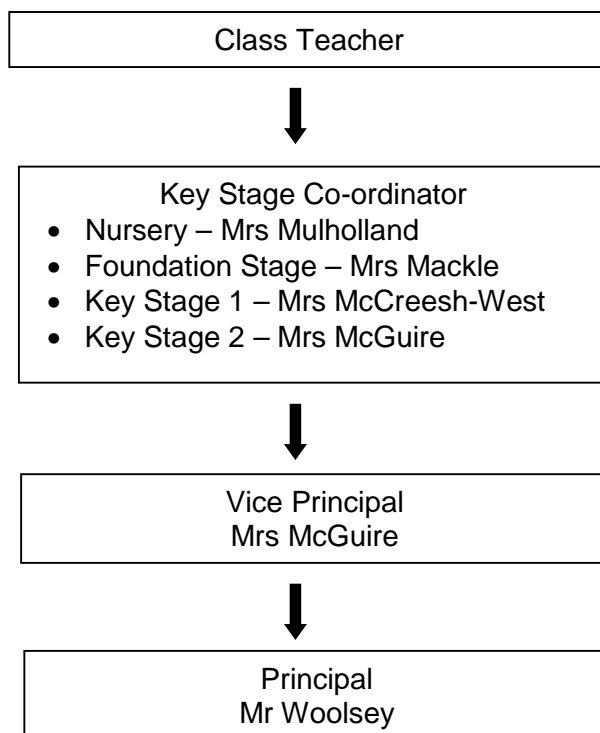
The Fire and Rescue Service came into school on Monday 18<sup>th</sup> September to give their annual talk to our Year 5 pupils on fire safety in the home. If your child is in Year 5 please speak to them about this.

## Mass to officially open St John The Baptist College

Our school choir took part in a special Mass to mark the official opening of St John The Baptist College on Thursday 21<sup>st</sup> September 2017. The Mass held in St John's Church was attended by many from the local community.

## General Queries / Concerns

At Ballyoran Primary School we believe in a strong partnership with parents and communication between home and school is a vital part of this. Meetings can be arranged with staff at any time and we would encourage you to follow the flow chart below when raising general queries / concerns:



Obviously parents are free to make an appointment to speak to the Principal at any time.

## Picking Pupils Up

A significant number of pupils are not being picked up at the end of the school day on time. It is vital that parents are punctual when collecting their children otherwise they get anxious. If you are running late we would ask that you phone the office and inform us of this. If a child is not collected and we are unable to make contact with parents/carers we have no option but to phone Social Services and/or the Police.

## Emergency Contact Details

It is vitally important that we hold up to date emergency contact details for our pupils. An increasing number of parents are not informing us when they change their mobile phone numbers. This is unacceptable and leaves us in a very difficult position if for example we needed to contact you if your child was seriously ill. I cannot stress the importance of this enough, please keep us up to date. Again as with late pick up, if we are unable to contact a parent/carer in the event of an emergency we will have no option but to refer this to Social Services.

## Extra Curricular Activities - Term 1

(See page 6)

## School Holidays 2017/2018

(See page 7)

## Menu for October

(See back page)

R Woolsey  
Principal

## Extra-Curricular Activities 2017/2018 Term 1

Club	Day	Dates	Time	Class	Staff	Location
ICT	Monday - Thursday	Weekly Commences Monday 18 <sup>th</sup> September	3.00 - 4.00	Yr 4 - 7	Mrs Glavin	ICT Suite
Gaelic	Monday	18 <sup>th</sup> , 25 <sup>th</sup> Sept, 9 <sup>th</sup> , 16 <sup>th</sup> & 23 <sup>rd</sup> Oct, 6 <sup>th</sup> , 13 <sup>th</sup> & 27 <sup>th</sup> Nov, 4 <sup>th</sup> & 11 <sup>th</sup> Dec	2.00 - 3.00	Yr 2	PC Coaching	Pitch/ Playground/ Hall
Gaelic	Monday	18 <sup>th</sup> , 25 <sup>th</sup> Sept, 9 <sup>th</sup> , 16 <sup>th</sup> & 23 <sup>rd</sup> Oct, 6 <sup>th</sup> , 13 <sup>th</sup> & 27 <sup>th</sup> Nov, 4 <sup>th</sup> & 11 <sup>th</sup> Dec	3.00 - 4.00	Yr 3 - 7	PC Coaching	Pitch/ Playground/ Hall
Soccer	Tuesday	Dates to be confirmed	3.00 - 4.00	Yr 5 - 7	Ambassadors In Sport	Pitch/ Playground/ Hall
Arts & Crafts	Tuesday	19 <sup>th</sup> , 26 <sup>th</sup> Sept, 3 <sup>rd</sup> , 10 <sup>th</sup> , 17 <sup>th</sup> & 24 <sup>th</sup> Oct	3.00- 4.00	Yr 5 - 7	Mrs McMurray	Nursery 2
Cookery	Tuesday	26 <sup>th</sup> Sept, 10 <sup>th</sup> & 17 <sup>th</sup> Oct, 7 <sup>th</sup> , 14 <sup>th</sup> & 21 <sup>st</sup> Nov	3.00- 4.00	Yr 5- 7	Mrs McGuire	Staff Room
Cross Country	Wednesday	20 <sup>th</sup> Sept, 4 <sup>th</sup> , 11 <sup>th</sup> , 18 <sup>th</sup> Oct, 8 <sup>th</sup> & 15 <sup>th</sup> Nov	3.00- 4.00	Yr 4 - 7	Mr Woolsey	School Pitch / People's Park
Irish Dancing	Wednesday	8 <sup>th</sup> , 15 <sup>th</sup> , 22 <sup>nd</sup> & 29 <sup>th</sup> Nov, 6 <sup>th</sup> & 13 <sup>th</sup> Dec These dates may be subject to change.	3.00 - 4.00	Yr 4 - 7	Mrs Heaney	Hall/Dinnerhall
IPads	Wednesday	20 <sup>th</sup> Sept, 4 <sup>th</sup> , 11 <sup>th</sup> , , 18 <sup>th</sup> & 25 <sup>th</sup> Oct & 8 <sup>th</sup> Nov	3.00 - 4.00	Yr 4 - 7	Mrs Mulholland	Nursery 1

Please note Arts & Crafts, IPads and Cookery have very limited spaces and only those children who received a consent form from the teacher in charge of these clubs have been allocated a space.

Please note there will be no Clubs during the following weeks:

1. Parent/Teacher Meeting Week: 23<sup>rd</sup> - 27<sup>th</sup> October 2017
2. Half term week: 30<sup>th</sup> October - 3<sup>rd</sup> November 2017
3. Last week of term: 18<sup>th</sup> - 22<sup>nd</sup> December 2017

# Term Dates & School Holidays 2017/2018 Year

All dates are inclusive

## Term 1

### **Term Dates**

Friday 1<sup>st</sup> September – Friday 22<sup>nd</sup> December 2017

### **Holidays**

- Monday 2<sup>nd</sup> October 2017 – Staff Training Day
- Monday 30<sup>th</sup> October – Friday 3<sup>rd</sup> November 2017 – Half Term

**Christmas Holiday: Monday 25<sup>th</sup> December 2017 – Thursday 4<sup>th</sup> January 2018**

## Term 2

### **Term Dates**

Friday 5<sup>th</sup> January – Wednesday 28<sup>th</sup> March 2018

### **Holidays**

- Monday 12<sup>th</sup> - Friday 16<sup>th</sup> February 2018 – Half Term
- Monday 19<sup>th</sup> March 2018 - St. Patrick's Day Holiday

**Easter Holiday: Thursday 29<sup>th</sup> March – Friday 6<sup>th</sup> April 2018**

## Term 3

### **Term Dates**

Monday 9<sup>th</sup> April – Friday 29<sup>th</sup> June 2018

### **Holidays**

- Monday 7<sup>th</sup> May 2018 – May Bank Holiday
- Monday 28<sup>th</sup> – Wednesday 30<sup>th</sup> May 2018 – May Bank Holiday & Staff Training Days

School will finish at midday on the last day of each term.

Note: Removing pupils during term time is not recommended; please try not to book holidays or other trips during the school term. Staff cannot prepare work in advance for children who are on holidays and very often these children miss vital work during their absence. The school is also required to inform the EA when a child is removed from school for a holiday. This information is recorded and may be used by the EA in appropriate situations, i.e. Special Educational Needs Assessments or Child Protection issues.

