



### Safeguarding Team

**Principal:** Mr Woolsey  
**Designated Teacher:** Mrs McGuire  
**Deputy Designated Teacher:** Miss Baird  
**Nursery Deputy Designated Teacher:** Mrs Mulholland  
**Designated Governor:** Mrs Loney  
**Chairperson:** Mr Fleming

## News Sheet – June 2024

### Diary Dates for June 2024

|                  |   |
|------------------|---|
| 1 <sup>st</sup>  | First Holy Communion: 11am: St John's Church  |
| 3 <sup>rd</sup>  | Yr 3 Young Enterprise<br>Yr 7 Transition Workshop   |
| 4 <sup>th</sup>  | Yrs 3, 6, 7 & Junior LSC End of Year Trips<br>Sponsor Money for Fun Run to be returned  |
| 5 <sup>th</sup>  | Yr 7 Cycling Proficiency final session<br>Yrs 4 & 6 visit to Portadown Library  |
| 6 <sup>th</sup>  | Sponsored Fun Run & Picnic at People's Park – <b>see article on page 2</b>  |
| 7 <sup>th</sup>  | Nursery, Yr 1/2 & Yr 2/3 End of Year Trips<br>Yr 7 to Bee Safe event  |
| 10 <sup>th</sup> | Yr 7 Transition Workshop<br>Yr 3 Young Enterprise   |
| 11 <sup>th</sup> | Sports Day: 9.30am – <b>see article on page 2</b><br>School finishes early for all pupils: <ul style="list-style-type: none"><li>• 12.45pm: Nursery</li><li>• 12.50pm: Years 1 &amp; 2 &amp; Junior LSC</li><li>• 12.55pm: Yrs 3 &amp; 4</li><li>• 1.00pm: Yrs 5 – 7 &amp; Senior LSC</li></ul>   |
| 12 <sup>th</sup> | Yrs 4, 5 & Senior LSC End of Year Trips<br>Yr 7 Love for Life Conference<br>Yr 6 visit to Portadown Library   |
| 13 <sup>th</sup> | 50 <sup>th</sup> Birthday Fun Day – <b>see article on page 3</b>  |
| 17 <sup>th</sup> | Gaelic After School Club ends   |
| 18 <sup>th</sup> | Talent Show   |
| 19 <sup>th</sup> | Nursery Graduation: 10am<br>Yr 5 Mental Health Workshop<br>Yr 6 visit to Portadown Library  |
| 20 <sup>th</sup> | Yr 1 End of Year Trip<br>Last day of Yr 1 & 2 After Schools Club  |
| 21 <sup>st</sup> | Prize Day<br>Nursery Transition Forms & Annual Reports issued to parents<br>Last day for Year 7 pupils<br>School finishes early for all pupils: <ul style="list-style-type: none"><li>• 12.45pm: Nursery</li><li>• 12.50pm: Years 1 &amp; 2 &amp; Junior LSC</li><li>• 12.55pm: Yrs 3 &amp; 4</li><li>• 1pm: Yrs 5 – 7 &amp; Senior LSC</li></ul> |
| 24 <sup>th</sup> | 11am: Class Changes   |
| 27 <sup>th</sup> | End of Year Class Parties   |

- 28<sup>th</sup> Last day of term – no uniform, no dinners, school finishes early for all pupils:
- 11.45am: Yrs 6 – 7 & Senior LSC
  - 11.50am: Yrs 3 & 4
  - 11.55pm: Yrs 1 & 2 & Junior LSC
  - 12noon: Nursery

### Homework

The last night of Homework for this year is now **Thursday 30<sup>th</sup> May** and we would encourage pupils to take the opportunity of having no homework to get outside in the month of June and enjoy the longer lighter evenings and hopefully some better weather soon.

### Data Collection Forms

On **Monday 3<sup>rd</sup> June**, you will receive a blank Data Collection Form to be completed for each of your children at the school, in preparation for next year. It is essential that we have up to date information and consent for all pupils. Please ensure that these forms are **fully completed and signed** before returning them as in previous years we have had to send many back home again as parts were left out. Completed forms must be returned to school in the envelopes **by Friday 14<sup>th</sup> June 2024**.

### Sponsored Fun Run & Picnic

We are looking forward to our Sponsored Fun Run and Picnic in the People's Park on **Thursday 6<sup>th</sup> June 2024**. Please see previous letter for further information at:

<https://tinyurl.com/5n78cezu>

All proceeds from this event will go towards our target of £12,000 for a new Sensory Room which will benefit all of our pupils. Please ensure that all Sponsor Money and Forms are returned by **Tuesday 24<sup>th</sup> May 2024**.

A reminder that each class have been given a colour and you have been informed of this and we would like pupils to wear something in that colour.

### Sports Day

This will take place on **Tuesday 11<sup>th</sup> June at 9.30am**.

The events will take place as follows:

- Nursery: Nursery Outdoor Play Area
- Years 1 & 2 & Junior LSC: Senior Playground
- Years 3 & 4: All Weather Pitch
- Years 5 – 7 & Senior LSC: All Weather Pitch

We ask that children come to school in their PE kit that day, they should also bring a cap, water bottle and sunscreen already applied.

### **School will finish early for all pupils when they have had their lunch, with the following dismissal times:**

- 12.45pm: Nursery
- 12.50pm: Years 1 & 2 & Junior LSC
- 12.55pm: Yrs 3 & 4
- 1pm: Yrs 5 – 7 & Senior LSC

Please note, in the event that it is wet, Sports Day will be rescheduled for the next available dry day. **Pupils will still finish school early on Tuesday 11<sup>th</sup> June even if Sports Day is cancelled because of the weather.**

### **50<sup>th</sup> Birthday Fun Day**

As you will already be aware, Ballyoran Primary School is celebrating its 50<sup>th</sup> Birthday (1974 – 2024) this year and we are celebrating this in a number of ways. Earlier in the year we had a whole school Anniversary Photograph taken to mark this special milestone. On **Thursday 13<sup>th</sup> June 2024** we are having a special Birthday Fun Day in school for all our pupils. This day will be completely free of charge and will involve the following:

- Fitness Freddy
- Inflatables
- Ice Cream Van
- African Drumming & Dance
- Play Bus
- Balloon Modelling
- Chip Shop Lunch
- Birthday Cake

Please note the following important information about this special day:

1. To make best use of the time available, we need all pupils in school for **8.45am**.
2. Pupils should come to school wearing sports gear
3. Pupils should not bring in a breaktime snack on this day
4. **All** pupils will receive a Chip Shop Lunch free of charge so we ask that no packed lunches are sent in
5. Pupils should bring a water bottle and if the weather is good ensure that they have suncream on and a sun cap.
6. Pupils will finish school at the normal times.

We hope that this going to be a fun filled day for all of our pupils and staff as we celebrate 50 years of our school.

### **Eco Schools – Green Flag Reassessment**

Our School has successfully received the Green Flag after re assessment. Well done and thank you to Miss Baird and the Eco Committee for all of their hard work in achieving this.

### **Peered Paired Reading Rewards**

Well done to our four Year 7 Peer Paired Readers who received recognition in assembly recently for all their hard work doing peer paired reading with younger pupils this year.

They were:

- Ola Zaliwiska
- Beth Creaney
- Ethan Millar
- Denas Ciujevas

Many of the pupils who they have worked with have shown major improvements in their reading. Each of the 4 pupils received a certificate and a £50 Rushmere Voucher.

## **Attendance**

Well done to the classes with the highest attendance for April:

- Foundation/Key Stage 1: Year 4 - 95.5%
- Key Stage 2: Year 5 - 95.5%

The whole school attendance for April was 92.7%

## **Nursery News**

### **Coach Chris**

The Nursery enjoyed another visit from Coach Chris on 31<sup>st</sup> May

## **Induction Meetings**

Thank you to the majority of parents who attended our Nursery and Year 1 Induction Meetings. A reminder that if you were unable to make it that you need to collect the Induction Pack from school.

## **Year 7 Post Primary Choices**

These were communicated to parents on Saturday 18<sup>th</sup> May and we are delighted that all of our Yr 7 pupils were successful in getting a place at their first preference post primary school.

## **Assessment Fortnight**

Thank you for ensuring that your child/children were in school every day during Assessment Fortnight.

## **Annual Reports for Year 1 to 7 and Nursery Transition Forms**

Annual Reports and Nursery Transition Forms will be sent home with pupils on **Friday 21<sup>st</sup> June**. You will receive one copy which does not need signed and returned. If you have any queries about anything written in the Report, please do not hesitate to contact the Class Teacher.

## **After School Clubs**

As you know, we have been piloting the return of a small number of after school clubs in the last few weeks. The response to these has been very positive. We are currently planning for the new school year and will let you know whether we plan to continue these or not before the end of June.

## **SBNI Online safety Hub**

The Safeguarding Board for Northern Ireland have launched a new Online Safety Hub which has resources for both children and adults and we have been asked to inform you about this and encourage you to take a look at it:

<https://onlinesafetyhub.safeguardingni.org/>

## **Communication/PR**

We have recently been reviewing how we communicate with parents and have decided to set up a school Face Book Page. This will hopefully happen before the end of June and we will send you further information on this when it happens.

## **Sun Safety in School**

In anticipation of better weather, it is incredibly important that children bring a cap and sun glasses to school if it is sunny. We also ask that all children wear sun cream to school which is applied before they arrive in the morning as this offers protection during the school day. Finally, pupils should have water with them in non-spill bottles.

## **Stay Safe and Stay Out Campaign**

As we approach the summer we have again been asked by the Health and Safety Executive for Northern Ireland to bring to your attention the dangers of children going near quarries.

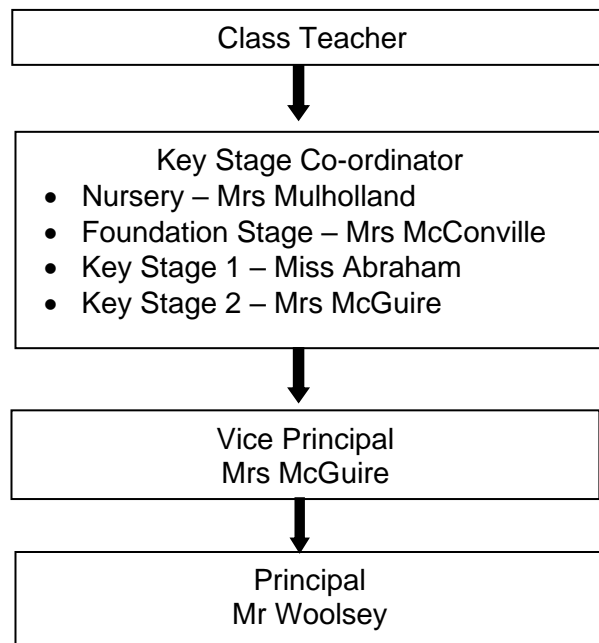
The potential hazards that people expose themselves to are:

- Swimming in quarry lakes that can have very cold water even on a hot day in the middle of summer. Strong swimmers have drowned in quarries due to the unexpected impact that the extreme cold has had on their bodies.
- The water in quarry lakes can be very deep and shelving, exit from the water may only be possible in a few places, there may be pumps working or currents that can drag you under the water.
- There can be concealed underwater obstructions and other hazards that can seriously injure swimmers or individuals jumping into the water – tombstoning into quarry lakes is not safe.
- Tunnelling into piles of sand or playing on stockpiles exposes you to the risk of sudden collapses or movements that can easily bury you.
- Walking near the edge of quarry faces exposes you to the risk of serious falls as the edges can be unstable and collapse unexpectedly or sheer faces be obstructed by vegetation.
- Climbing or walking near rock faces can expose you to the risk of rock falls.
- Surfaces in quarries that may look solid, such as the surface of a silt pond, can suddenly break and act like quick sand sucking you down.
- Trail and quad biking in a quarry exposes riders to risks from unstable terrain, unexpected obstructions and being hit by moving plant.
- Young people on bikes or on foot may not be visible to operators of large machinery, they may not appreciate that the driver cannot see them.
- Quarries can often be located in remote sites where mobile reception is poor and there is no one on hand to help in the event of an accident.

## **General Queries / Concerns**

At Ballyoran Primary School we believe in a strong partnership with parents and communication between home and school is a vital part of this. If you need to speak to your child's teacher, you should contact the office in the first instance and a suitable time will be arranged. Unfortunately, it will not be possible for parents to speak to teachers in the morning as they are busy preparing for the day and supervising pupils. If you do need to pass an urgent message to the teacher in the morning, please either send an email, note or speak to the secretary who will pass the message on. Meetings can be

arranged with staff at a mutually convenient time through the office and we would encourage you to follow the flow chart below when raising general queries / concerns:



### **Pupils Leaving School Early**

We discourage pupils being removed from school early as this means they will miss out on valuable learning. If a child, however, needs to leave school early for any reason, a reminder that they **must** be collected from Reception by an **adult**. We are unable to allow pupils to walk home on their own and this policy will be strictly enforced.

### **Picking Pupils Up**

It is vital that parents are punctual when collecting their children otherwise they get anxious. If you are running late we would ask that you phone the office and inform us of this. If a child is not collected and we are unable to make contact with parents/carers and have exhausted all listed contacts, we have no option but to phone Social Services.

### **Emergency Contact Details**

It is vitally important that we hold up to date emergency contact details for our pupils. I cannot stress the importance of this enough, please keep us up to date. Again as with late pick up, if we are unable to contact a parent/carer and have exhausted all listed contacts, in the event of an emergency we will have no option but to refer this to Social Services.

### **School Uniform**

Thank you to the majority of parents who ensure that pupils are wearing school uniform every day. We are very proud of how smart our pupils look in their uniforms. However, as we approach the end of term a significant number of pupils are not wearing proper

uniform. A reminder that footwear should be black. Please ensure that standards do not slip.

**School Dinner Menu**

<https://tinyurl.com/yx4krfjb>

Richard Woolsey  
Principal