



## News Sheet – December 2022

### Safeguarding Team

**Principal:** Mr Woolsey  
**Designated Teacher:** Mrs McGuire  
**Deputy Designated Teacher:** Mrs Heaney  
**Nursery Deputy Designated Teacher:** Mrs Mulholland  
**Designated Governor:** Mrs Loney  
**Chairperson:** Mr Fleming

### Diary Dates – December

- 1<sup>st</sup> Coats Rule enforced from today  
Community Dentist in Learning Support Class
- 2<sup>nd</sup> Daily Mile Christmas Santa Run – pupils to wear Santa hats  
Christmas Dinner for pupils  
Taster Day for Year 7 pupils at St John the Baptist's College  
Year 6 and LSC trip to Bocombra PS to watch their Christmas play 'Santa's on Strike'
- 6<sup>th</sup> Choir at Rushmere Shopping Centre from 1.30 – 2.30pm
- 7<sup>th</sup> Nursery Christmas Nativity at 10am  
Pantomime 'Cinderella' at Market Place Theatre - Years 3 -7 including LSC
- 9<sup>th</sup> Christmas Performance 'Lights, Camel, Action' at 10am  
School will finish at lunchtime for all pupils, staggered times as follows:  
12.30pm: Yr 1 & Nursery  
12.35pm: Yr 2  
12.40pm: Yr 3  
12.45pm: Yr 4  
12.50pm: Yr 5  
12.55pm: Yr 6 & LSC  
1pm: Yr 7
- 12<sup>th</sup> Christmas Performance 'Lights, Camel, Action' at 10am
- 13<sup>th</sup> Trip for Foundation Stage pupils to Navan Centre for Christmas Fun  
Nursery trip to Peter Pan's
- 15<sup>th</sup> Christmas Parties – Christmas Jumper Day/Non uniform
- 16<sup>th</sup> Last day of term, school finishes early, staggered times as follows:  
11.30am: Yr 7  
11.35am: Yr 6 & LSC  
11.40am: Yr 5  
11.45am: Yr 4  
11.50am: Yr 3  
11.55am: Yr 2  
Noon: Yr 1 & Nursery

### Christmas Holidays

School will be closed from Monday 19<sup>th</sup> December 2022 to Wednesday 4<sup>th</sup> January 2023. Term 2 begins on Thursday 5<sup>th</sup> January 2023.

### Christmas Performances

The Nursery Nativity will be on Wednesday 7<sup>th</sup> December at 10am.

This year's performance by the Primary School is 'Lights, Camel, Action'. The first performance is on Friday 9<sup>th</sup> December at 10am and the second performance is on Monday 12<sup>th</sup> December at 10am. All three performances are ticket only and information regarding ticket ordering has already been issued.

### **Christmas Post**

This will begin on Monday 5<sup>th</sup> December 2022. Please ensure both names, teacher's name and year group are put on the envelopes. Our Learning Support Class will organise and deliver the post daily.

### **Christmas Cards designed by pupils**

These have been sent home this week. Please return with order form and money by Friday 2<sup>nd</sup> December if you wish to place an order.

### **Anti-Bullying Week (14<sup>th</sup> – 18<sup>th</sup> November 2022)**

Odd Socks Day was good fun and kicked off the week on Monday 14<sup>th</sup> November 2022. 'Reach Out' is this year's theme with the key message repeated in lessons and activities; *'Let's come together and **reach out** to end bullying'*.

### **Year 4 WW2 Trip**

Year 4 enjoyed a trip to the Armagh Museum to learn all about World War 2. We spent time learning about rationing, evacuation, The Blitz and much more. Some pupils in Year 4 were able to try on uniforms from WW2. We even got to make our own gas masks! Year 4 had lots of fun at the museum, and it brought our World Around Us topic to life.

### **Theraplay**

On Tuesday 15<sup>th</sup> November, pupils from Year 3, Year 5 and LSC participated in Theraplay activities with Ryan from EA Nurture Team. The pupils and staff had great fun and they all felt very relaxed afterwards.

### **Choir**

The Choir and Mrs Muldrew will be singing Christmas carols at Rushmere Shopping Centre on Tuesday 6<sup>th</sup> December 2022 from 1.30 – 2.30pm.

### **Coats**

As the weather has been turning colder, we have been advising pupils to bring a warm coat to school. From Thursday 1<sup>st</sup> December, any pupils who do not bring a coat to school will have to remain inside at break and lunch time.

### **School Photographs**

If you wish to order photographs, please return your order in the envelope provided with the correct money by Friday 2<sup>nd</sup> December 2022.

### **Year 6 - Young Enterprise NI**

On Monday 7<sup>th</sup> November, children in Year 6 took part in the 'Our World' programme, which was delivered by Young Enterprise, NI. During the programme, children learned about which countries rely on each other for resources. They were introduced to the concept of importing and exporting, as well as learning about the steps involved in setting up a business and trading internationally. The programme was fun and interactive. The children in Year 6 thoroughly enjoyed it.

### **Children in Need 2022**

On Friday 18<sup>th</sup> November, we supported BBC Children in Need by having a non-uniform day and a bun sale. Children came to school with crazy hairstyles and wearing something spotty. A big thank you to staff, parents/carers, Just Desserts and The Home Bakery for all the delicious treats, both home-made and bought. We really appreciate your support, effort, and generosity. A total of £383.60 was raised for this very worthwhile charity.

### **Dogs Trust**

On Monday 21<sup>st</sup> November and Tuesday 22<sup>nd</sup> November, we had Julie from Dogs Trust in school to deliver some workshops to children from Year 1 to Year 7. The workshops focused on Safe Behaviour Around Dogs. The workshops aim to harness safe, loving relationships between children and the dogs they share their lives and social settings with. Through discussion, role-play and song, the children were encouraged to adopt safe and kind behaviours towards their canine friends.

### **Ditch the Dark Day**

On Friday 25<sup>th</sup> November pupils took part in 'Ditch the Dark Day' by wearing bright colours to school. A special thank you to all the parents who helped make the 'Walking Bus' such a success! The children all looked fantastic in their bright colours. Almost 100 people did the walk to school, it was fabulous! Thank you to Mrs Muldrew who brought the message 'Be Bright, Be Seen' in Assembly and well done to the boys and girls who won best dressed. We hope this will encourage all our pupils to stay bright and seen, encourage more to walk to school and keep active and healthy.

### **Journey to Santa**

We are encouraging children to stay active on the journey to school this winter with our Journey to Santa Challenge! The challenge begins on Monday 28<sup>th</sup> November and finishes on Friday 16<sup>th</sup> December. Children taking part in the challenge have received a special Journey to Santa stamp card to keep track of their active journeys to school. Each child who completes their stamp card will be entered into a draw to win a prize.

Thank you in advance for supporting this initiative.

### **Sickness**

You will be aware that there is a lot of sickness around at the moment including an unpleasant vomiting and diarrhoea bug. A reminder that if pupils have this bug they should not be sent to school and should not return to school until 48 hours after their last vomiting or diarrhoea episode. This is to protect the school community as these bugs can very quickly travel around the school.

Parents are also reminded to go over the importance of good hand hygiene and respiratory hygiene (Catch It, Bin It, Kill It) with their children.

Finally, please see the latest PHA Guidance for infection control in school settings which gives recommended times for pupils to be kept off school for various illnesses:

<https://tinyurl.com/44nrzcty>

Keep up to date with the latest guidance on Covid-19 at:

<https://tinyurl.com/36fsy9xt>

### **Breakfast Club**

Nursery – Year 7 pupils are welcome to attend in the Dinner Hall from 8.15 – 8.45am. The cost is £1 per day. Parents must book for breakfast club by Midday every Friday for the following week, by emailing [jsloan341@c2kni.net](mailto:jsloan341@c2kni.net). Children who have not been pre-booked should not attend.

## Nuts

As you are aware, we endeavour to ensure that no nuts or nut-based products are brought into school to protect several pupils who have severe nut allergies. Please respect our 'No Nuts' Policy.

## Car Parks

A reminder that pupils and parents must use the Pedestrian Entrance only in the mornings and afternoons. Car Parks are for staff and visitors only. Please respect this policy by not entering the car parks in vehicles or on foot.

## School Website

Keep up to date with school news, information and events by logging on to [www.ballyoranps.com](http://www.ballyoranps.com). Class Pages will be updated regularly giving parents a useful insight into what their children are doing in class.

## School App

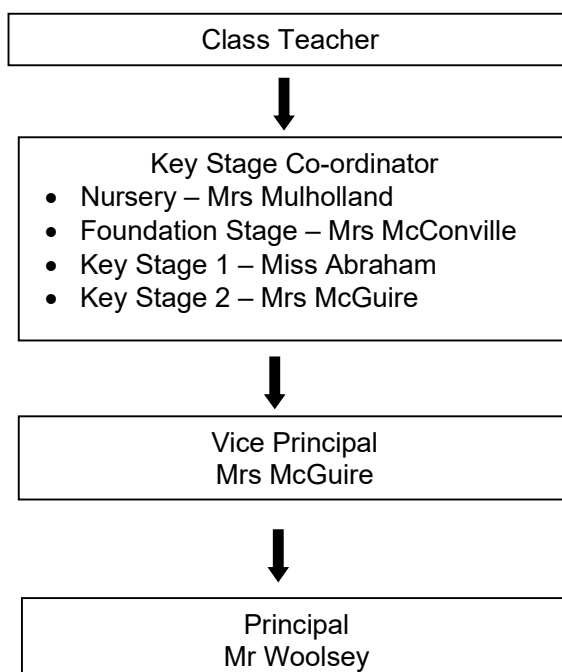
It is important that all parents download and authenticate the school app as all communication is now sent through the App. If you do not have the school app, you will miss vital communications from school.

## General Queries / Concerns

At Ballyoran Primary School we believe in a strong partnership with parents and communication between home and school is a vital part of this.

If you need to speak to your child's teacher, you should contact the office in the first instance and a suitable time will be arranged. Unfortunately, it will not be possible for parents to speak to teachers in the morning as they are busy preparing for the day and supervising pupils. If you do need to pass an urgent message to the teacher in the morning, please either send an email, note or speak to the secretary who will pass the message on.

Meetings can be arranged with staff at a mutually convenient time through the office and we would encourage you to follow the flow chart below when raising general queries / concerns:



**Picking Pupils Up**

It is vital that parents are punctual when collecting their children otherwise they get anxious. If you are running late we would ask that you phone the office and inform us of this. If a child is not collected and we are unable to make contact with parents/carers we have no option but to phone Social Services and/or the Police.

**Emergency Contact Details**

It is vitally important that we hold up to date emergency contact details for our pupils. I cannot stress the importance of this enough, please keep us up to date. Again, as with late pick up, if we are unable to contact a parent/carer in the event of an emergency we will have no option but to refer this to Social Services.

**Menu for Term 2**

<https://tinyurl.com/2p98m4vh>

I would like to thank all our parents and staff for their continued support and co-operation.

Mrs R McGuire  
Vice Principal

