



### Safeguarding Team

**Principal:** Mr Woolsey  
**Designated Teacher:** Mrs McGuire  
**Deputy Designated Teacher:** Mrs Heaney  
**Nursery Deputy Designated Teacher:** Mrs Mulholland  
**Designated Governor:** Mrs Loney  
**Chairperson:** Mr Fleming

## News Sheet – June 2022

### Diary Dates for June 2022

1 <sup>st</sup> – 3 <sup>rd</sup>	School Closed – School Development Day and Extended Bank Holiday
6 <sup>th</sup>	Year 7 Transition Workshop 1 Nursery Football Coaching Session
7 <sup>th</sup>	Sports Day 9.30am School finishes at lunchtime for all pupils
8 <sup>th</sup>	Year 7 Transition Workshop 2
9 <sup>th</sup>	Year 7 Entrance Test – St John The Baptist College
10 <sup>th</sup>	School closed – Staff Training
13 <sup>th</sup>	Year 2 End of Term Trip to Airtastic Year 7 Love for Life Conference – Bocombra PS
14 <sup>th</sup>	Year 6 & 7 Resilience Workshop
15 <sup>th</sup>	Year 4 & 5 End of Term Trip to Airtastic
16 <sup>th</sup>	Nursery End of Term Trip to Peter Pan's Year 1 End of Term Trip to Scallywags Last day of Homework
17 <sup>th</sup>	Year 6 End of Term Trip to Airtastic & cinema Deadline for Data Collection Forms to be returned
20 <sup>th</sup>	Nursery Induction Sessions – Nursery closes at 12.15pm
21 <sup>st</sup>	Nursery Induction Sessions – Nursery closes at 12.15pm
22 <sup>nd</sup>	Year 7 & LSC End of Year Trip to Bushcraft at Oxford Island Nursery Graduation – 10am
23 <sup>rd</sup>	Year 3 End of Year Trip to Peter Pan's Annual Reports posted
24 <sup>th</sup>	Prize Day Nursery Transition Forms distributed Last day of Term for Year 7 pupils
27 <sup>th</sup>	Class Changes for next year
29 <sup>th</sup>	End of Year Class Parties
30 <sup>th</sup>	Last day of term – no uniform, no dinners, school finishes early for all pupils, staggered dismissals:

### School Closures – June 2022

Wednesday 1 <sup>st</sup> - Friday 3 <sup>rd</sup>	School Development Day and Extended Bank Holiday
Friday 10 <sup>th</sup>	Staff Training

### Staffing

Congratulations to Mrs Muldrew who was recently appointed by the Board of Governors to a permanent teaching post within the school and to Miss Wright who was appointed to a temporary post for next year.

## **Sports Day**

This will take place on Tuesday 7<sup>th</sup> June at 9.30am. This is our first normal Sports Day since before the pandemic and we are delighted to be inviting parents back again. The Nursery event will take place in the Nursery Outdoor Play Area with the Primary event divided into the three Key Stages on the all-weather pitch. We ask that children come to school in their PE kit that day, bring a hat, water bottle and sunscreen already applied.

**School will finish early for all pupils when they have had their lunch, with the following dismissal times:**

1.00pm: Nursery & Year 1

1.05pm: Year 2

1.10pm: Year 3

1.15pm: Year 4

1.20pm: Year 5

1.25pm: Year 6 & LSC

1.30pm: Year 7

Please note, if it is wet, Sports Day will be rescheduled for the next available dry day.

**Pupils will still finish school early on Tuesday 7<sup>th</sup> June even if Sports Day is cancelled because of the weather.**

## **Annual Reports for Year 1 to 7 and Nursery Transition Forms**

Annual Reports will be posted 2<sup>nd</sup> class on Thursday 23<sup>rd</sup> June and Nursery Transition Forms will be given to you directly by the Nursery Teacher on Friday 24<sup>th</sup> June. You will receive one copy and we are no longer asking for a signed copy to be returned to school. If you have any queries about anything written in the Report, please do not hesitate to contact the Class Teacher.

## **Confirmation**

Our Year 7 pupils made their Confirmation on Thursday 12<sup>th</sup> May in St John's Church. The ceremony was conducted by Very Rev. Canon Toner and all the children participated very well in the ceremony.

## **First Holy Communion**

Year 4 made their First Holy Communion in St. John the Baptist Church on Saturday 14<sup>th</sup> May. The ceremony was conducted by Very Rev. Canon Toner and all the children participated very respectfully in the ceremony.

## **Great Big Purple Picnic**

The School took part in Action Mental Health's 'Great Big Purple Picnic' on Friday 13<sup>th</sup> May. The pupils came into school wearing purple as part of a non uniform day and all enjoyed a picnic lunch outside at lunchtime. We also had an ice-cream van in school and every child got a free ice cream. Thankfully the weather stayed dry and all of the pupils had a great time. Thank you to everyone who supported this event with your donations which totalled an amazing £455.40 which will go towards the very worthwhile work of Action Mental Health.

## **Nursery News**

### **Coach Chris**

The Nursery enjoyed another visit from Coach Chris on 16<sup>th</sup> May

### **Blackberry Farm**

On 31<sup>st</sup> May Nursery pupils enjoyed a visit from Blackberry Farm. The pupils got to meet and pet many animals including a goat, lambs, chicks and a rabbit.

### **Year 5 Fire Safety Talk**

Year 5 pupils enjoyed a visit from the Portadown Fire and Rescue Service on 30<sup>th</sup> May. As usual the pupils were educated about the importance of Fire Safety in the home.

### **Year 2 Mini Professors**

Year 2 had a fantastic time on 31<sup>st</sup> May with a visit from Adam from Mini Professors. The topic for the workshop was Space and they learned a lot of facts about Space and carried out many exciting experiments which included building a moon crater and a rocket.

### **Sustrans Get Moving In May**

Well done to all of our pupils who took part in the Sustrans Get Moving in May event and for actively travelling to school throughout the month. Congratulations to Year 7 for achieving the highest percentage of active travels in the school, an amazing 81%. Their reward will be an ice cream party. Thank you to all our parents for your support with this initiative.

### **Induction Meetings**

Thank you to all the parents who attended our Year 1 Induction Meeting on 31<sup>st</sup> May. Any parents who were unable to attend should call at the office to collect Induction Packs and give us your Data Collection Form.

Nursery Induction will take place on **Monday 20<sup>th</sup> and Tuesday 21<sup>st</sup> June 2022** and Nursery will close early at **12.15pm** on these two days to facilitate these. Parents must bring their Data Collection Forms with them to the Induction.

### **Year 7 Post Primary Acceptance Letters**

These were posted to parents on Saturday 21<sup>st</sup> May and we are delighted that all of our Year 7 pupils were accepted in their first preference school.

### **Assessment Fortnight**

Thank you for ensuring that your child/children were in school every day during Assessment Fortnight.

### **Sun Safety in School**

If the good weather ever does arrive, it is incredibly important that children bring a hat in to school every day. We also ask that all children wear sun cream to school which is applied before they arrive in the morning as this offers protection during the school day. Finally, pupils should have water with them in non-spill bottles.

## **Stay Safe and Stay Out Campaign**

As we approach the summer we have again been asked by the Health and Safety Executive for Northern Ireland to bring to your attention the dangers of children going near quarries.

The potential hazards that people expose themselves to are:

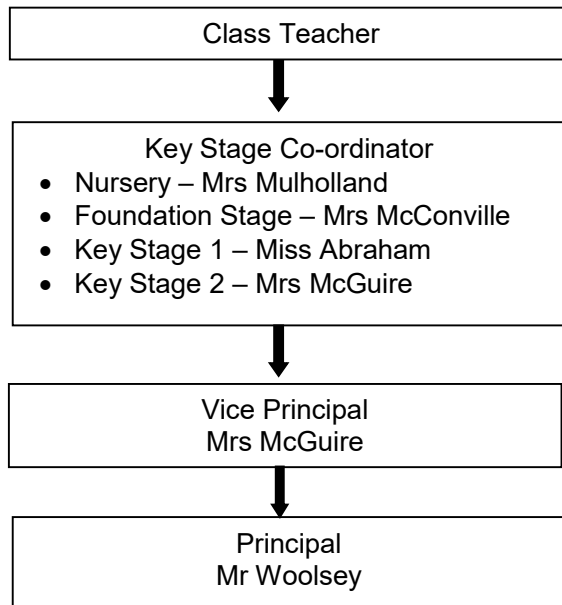
- Swimming in quarry lakes that can have very cold water even on a hot day in the middle of summer. Strong swimmers have drowned in quarries due to the unexpected impact that the extreme cold has had on their bodies.
- The water in quarry lakes can be very deep and shelving, exit from the water may only be possible in a few places, there may be pumps working or currents that can drag you under the water.
- There can be concealed underwater obstructions and other hazards that can seriously injure swimmers or individuals jumping into the water – tombstoning into quarry lakes is not safe.
- Tunnelling into piles of sand or playing on stockpiles exposes you to the risk of sudden collapses or movements that can easily bury you.
- Walking near the edge of quarry faces exposes you to the risk of serious falls as the edges can be unstable and collapse unexpectedly or sheer faces be obstructed by vegetation.
- Climbing or walking near rock faces can expose you to the risk of rock falls.
- Surfaces in quarries that may look solid, such as the surface of a silt pond, can suddenly break and act like quick sand sucking you down.
- Trail and quad biking in a quarry exposes riders to risks from unstable terrain, unexpected obstructions and being hit by moving plant.
- Young people on bikes or on foot may not be visible to operators of large machinery, they may not appreciate that the driver cannot see them.
- Quarries can often be located in remote sites where mobile reception is poor and there is no one on hand to help in the event of an accident.

## **Data Collection Forms**

During the month of June, you will receive a blank Data Collection Form to be completed for each of your children at the school, in preparation for next year. It is essential that we have up to date information on pupils, particularly emergency contact details. Completed forms must be returned to school in the envelopes **by Friday 17<sup>th</sup> June 2022.**

## **General Queries / Concerns**

At Ballyoran Primary School we believe in a strong partnership with parents and communication between home and school is a vital part of this. If you need to speak to your child's teacher, you should contact the office in the first instance and a suitable time will be arranged. Unfortunately, it will not be possible for parents to speak to teachers in the morning as they are busy preparing for the day and supervising pupils. If you do need to pass an urgent message to the teacher in the morning, please either send an email, note or speak to the secretary who will pass the message on. Meetings can be arranged with staff at a mutually convenient time through the office and we would encourage you to follow the flow chart below when raising general queries / concerns:



### **Pupils Leaving School Early**

We discourage pupils being removed from school early as this means they will miss out on valuable learning. If a child, however, needs to leave school early for any reason, a reminder that they **must** be collected from Reception by an **adult**. We are unable to allow pupils to walk home on their own and this policy will be strictly enforced.

### **Picking Pupils Up**

It is vital that parents are punctual when collecting their children otherwise they get anxious. If you are running late we would ask that you phone the office and inform us of this. If a child is not collected and we are unable to make contact with parents/carers and have exhausted all listed contacts, we have no option but to phone Social Services.

### **Emergency Contact Details**

It is vitally important that we hold up to date emergency contact details for our pupils. I cannot stress the importance of this enough, please keep us up to date. Again as with late pick up, if we are unable to contact a parent/carer and have exhausted all listed contacts, in the event of an emergency we will have no option but to refer this to Social Services.

### **School Uniform**

Thank you to the majority of parents who ensure that pupils are wearing school uniform every day. We are very proud of how smart our pupils look in their uniforms. However, as we approach the end of term a significant number of pupils are not wearing proper uniform. A reminder that footwear should be black and ties must be worn every day. Please ensure that standards do not slip.

### **School Dinner Menu**

<https://tinyurl.com/bdhsub96>

Richard Woolsey  
Principal