



## News Sheet – February 2022

### Safeguarding Team

**Principal:** Mr Woolsey  
**Designated Teacher:** Mrs McGuire  
**Deputy Designated Teacher:** Mrs Heaney  
**Nursery Deputy Designated Teacher:** Mrs Mulholland  
**Designated Governor:** Mrs Loney  
**Chairperson:** Mr Fleming

### **Covid-19 Update**

You will be aware that there has been a major increase in the number of people testing positive for Covid-19 in recent weeks and this has been reflected in school with the number of reported positive cases rising last week by 400% on the previous week. The current wave of Omicron has still not peaked in schools and to help us get through the next few weeks safely and to allow us to keep school open, I must ask you to strictly adhere to the following:

1. If your child has any symptoms of Covid-19 please do not send them to school, or if they are unwell in any way please do not send them to school. Unfortunately, pupils who are unwell are being sent to school on a daily basis which is putting other pupils and staff at risk.
2. Although there is currently no advice from PHA to test primary school pupils regularly like post primary school pupils, I would ask you to consider doing LFD tests regularly with your child/children.
3. If your child tests positive for Covid-19 on a LFD Test, please do not send them to school, follow the PHA guidance on self-isolation and **please inform the school immediately.**
4. If anyone in your household tests positive for Covid-19, please do not send other pupils to school. This is to protect our school community as much as possible as we have seen in many cases that when one person gets Covid-19 in a household the other children eventually get it as well.
5. If another pupil in your child's class tests positive for Covid-19 we will inform you by text, please then carry out a LFD test on your child when they get home.
6. If there are a cluster of positive cases in a class, currently defined as 20% of the class at any one time, again you will be informed by text. **PHA guidance states that all pupils in that class must have a LFD Test before returning to school.**
7. Please encourage your children to adhere to the mitigations of good hand hygiene, good respiratory hygiene, staying in their bubbles, social distancing etc and please continue to wear a face covering and social distance when coming into the school grounds yourself.

The most up to date PHA guidance can be found at:

<https://www.nidirect.gov.uk/articles/coronavirus-covid-19-self-isolating-and-close-contacts>

It is my hope that by the Spring we will be in a much better position but in order to get us to that point I would urge you not to be complacent and continue to work with us in trying to keep our school community operating safely.

### **Diary Dates for February 2019**

1 <sup>st</sup>	Post Primary Admission Application Process opens online
5 <sup>th</sup>	GL Common Entrance Assessment Results published
7 <sup>th</sup>	Nursery Health Visitor Reviews
7 <sup>th</sup> – 11 <sup>th</sup>	Children's Mental Health Week SEN Annual Reviews
8 <sup>th</sup>	Safer Internet Day
9 <sup>th</sup> – 10 <sup>th</sup>	Nursery Health Visitor Reviews
11 <sup>th</sup>	Non Uniform Day – Wear Red for Chest, Heart & Stroke

14 <sup>th</sup> – 21 <sup>st</sup>	School Closed for Half Term and Staff Training
23 <sup>rd</sup>	Post Primary Admission Application Process closes online at 4pm
	Year 5 Egyptian Trip to Navan Centre
25 <sup>th</sup>	Year 5 Swimming block begins
28 <sup>th</sup>	Years 6 & 7 'Your Life' Sessions begin

### School Closures – February 2022

A reminder that school will be closed for Half Term from Monday 14<sup>th</sup> to Friday 18<sup>th</sup> February 2022. School will also now be closed for Staff Training on **Monday 21<sup>st</sup> February 2022**.

### Office Hours Reminder

Please note the office hours for the rest of this school year will as follows:

Monday – Friday: 8.30am – 3.00pm

Closed: 10.30am – 10.45am for break

### Breakfast Club

A reminder that our Breakfast Club operates in the dinner hall daily from 8.15 - 8.45am. The cost is 50p per day and parents must book in advance by 12noon on the Friday of the week before by emailing [jsloan341@c2kni.net](mailto:jsloan341@c2kni.net)

### Healthy Eating

As you know Ballyoran Primary School is a Health Promoting School and there are a number of ways that we ensure this.

### Healthy Breaks

Nursery to Year 2 get a healthy snack provided by the school, Year 3 – 7 must bring in their own healthy snack. To help parents we have created a table of suitable and non-suitable healthy break snacks:

Suitable healthy break snacks	Not allowed at break
Pieces of fresh fruit	Any type of confectionery, eg chocolate products and sweets
Fruit pots of sliced or chopped fresh fruit	Crisps and crisp-like products such as tortilla chips, potato sticks, corn chips, prawn crackers, puff crackers;
Canned fruit in natural juice	Cakes, buns or pastries
Salad pots	Cereal or fruit bars
Raw vegetables such as tomatoes, carrots, celery, peppers and cucumber	All biscuits
Bread, pancakes or scones with a thin spread of margarine	Fizzy drinks
Breadsticks or crackers with cheese	Dried fruit that has been sugared or coated in yogurt or chocolate;
Sandwiches, bagels, baguettes, pitta bread, tortilla wraps or rolls	Pretzels
Yogurts	Nuts

### Lunch Boxes

We encourage parents who prepare a packed lunch to ensure it is balanced and healthy and includes sandwiches and fruit. No fizzy drinks are allowed in packed lunches. A leaflet giving guidance on packing a Healthy Lunch is available at <https://tinyurl.com/2s4z9cyv>

## **Water**

We encourage pupils to drink plenty of water during the day as hydration is very important for children's concentration and learning. To do this pupils must have their own water bottle in school and we ask that you send in one with a non-spill lid.

More information on Healthy Eating can be found on the School Website at <https://ballyoran-primary-school.secure-primariesite.net/school-meals/>

## **Applications for Nursery and Year 1 for September 2022**

The closing date for these was midday on Friday 28<sup>th</sup> January 2022. Please ensure that all Birth Certificates and Benefits Forms have been submitted on the portal as failure to do this will negatively impact on your application. Parents will receive notification of placements on **Thursday 28<sup>th</sup> April 2022.**

## **Year 7 Transfer to Post Primary School**

Year 7 pupils and their parents are currently considering their options for post primary school at the moment. Unfortunately, there are no face to face Open Days this year because of the pandemic, however all schools have virtual events online. I would encourage all Year 7 parents and pupils to take their time and look closely at all the options before deciding which school best fits. We wish our Year 7 pupils well as they make this very important decision.

A reminder that the post primary admissions process will be online, similar to Nursery and P1. The Admissions portal opens at **12noon on Tuesday 1<sup>st</sup> February 2022** and closes at **4pm on Wednesday 23<sup>rd</sup> February 2022.** Parents should log on to the EA website at <https://www.eani.org.uk/parents/admissions>

## **Safer Internet Day**

This year we will celebrate Safer Internet Day on **Tuesday 8<sup>th</sup> February 2022.** Children will be involved in a special assembly and complete various activities throughout the day to help inform them of some of the dangers of being online.

## **Traffic Management**

Thank you to the vast majority of parents who are safe and respectful in how they drive and park near school when dropping off and picking up pupils. There are however a small number of people who do not do this and unfortunately they are putting others at risk by their actions.

Work on a new Traffic Management Scheme for the school will begin later this year, this will include a new entrance to the school off Ashgrove Road, including a Parents car park and drop off area and a one way system. This will take up part of our all-weather pitch and greatly reduce the congestion in Ballyoran Park. It will hopefully greatly improve your overall experience when dropping off and picking up pupils. I will give you more information on this in due course.

## **Nursery Soccer Coaching**

On Tuesday 17<sup>th</sup> January, the children in the Nursery enjoyed another visit from Coach Chris. We developed our football skills and enjoyed working together as a team.

## **Year 6 Healthy Me Workshops**

On Monday 24<sup>th</sup> January, the children in Year 6 took part in the 'Healthy Me' programme, which

was delivered by Action Mental Health. 'Healthy Me' is a vibrant and engaging mental health promotion programme aimed at children which explores emotional/mental health, healthy lifestyle choices and pathways to effective support through imaginative and interactive play and song. The programme positively promotes mental health and social and emotional well-being in children. The children were fully engaged and thoroughly enjoyed it.

### **Pupil Attendance**

As expected with the pandemic and the usual winter illnesses, attendance was well down during the month of December. Well done to the classes with the highest attendance for December which were:

Foundation Stage/Key Stage 1: Year 3 – 89.1%

Key Stage 2: Year 6 MCK – 86.5%

### **Pupils Leaving School Early**

We discourage pupils being removed from school early as this means they will miss out on valuable learning. If a child, however, needs to leave school early for any reason, a reminder that they **must** be collected from Reception by an **adult**. We are unable to allow pupils to walk home on their own and this policy will be strictly enforced.

### **Picking Pupils Up**

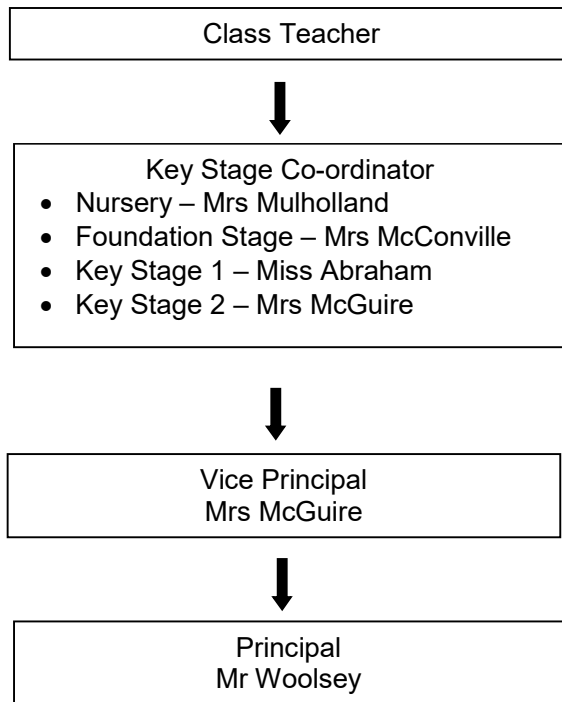
It is vital that parents are punctual when collecting their children otherwise they get anxious. If you are running late we would ask that you phone the office and inform us of this. If a child is not collected and we are unable to make contact with parents/carers and have exhausted all listed contacts, we have no option but to phone Social Services.

### **Emergency Contact Details**

It is vitally important that we hold up to date emergency contact details for our pupils. I cannot stress the importance of this enough, please keep us up to date. Again as with late pick up, if we are unable to contact a parent/carer and have exhausted all listed contacts, in the event of an emergency we will have no option but to refer this to Social Services.

### **General Queries / Concerns**

At Ballyoran Primary School we believe in a strong partnership with parents and communication between home and school is a vital part of this. If you need to speak to your child's teacher, you should contact the office in the first instance and a suitable time will be arranged. Unfortunately, it will not be possible for parents to speak to teachers in the morning as they are busy preparing for the day and supervising pupils. If you do need to pass an urgent message to the teacher in the morning, please either send an email, note or speak to the secretary who will pass the message on. Meetings can be arranged with staff at a mutually convenient time through the office and we would encourage you to follow the flow chart below when raising general queries / concerns:



## **Menu for Term 2**

<https://ballyoran-primary-school.secure-primariesite.net/menus-2020-2021/>

I would like to take this opportunity to thank you all for your continued patience, support and co-operation and wish the entire school community a pleasant and restful half term break.

Richard Woolsey  
Principal