



Safeguarding Team

Principal: Mr Woolsey
Designated Teacher: Mrs McGuire
Deputy Designated Teacher: Mrs Heaney
Nursery Deputy Designated Teacher: Mrs Mulholland
Designated Governor: Mrs Loney
Chairperson: Mr Fleming

News Sheet – June 2021

Diary Dates for June 2021

1 st	School Closed
14 th / 15 th	Nursery Induction
16 th	Nursery Graduation
16 th / 17 th	Year 1 Induction
17 th	Annual Reports posted
18 th	Prize Day
	Last day of term- Y7
	Nursery Transition forms distributed
19 th	Year 7 Parents receive information on Post Primary School
24 th	End of year class parties
25 th	Last day of term, no uniforms, staggered dismissals and no dinners

School Closures – June 2021

Tuesday 1st June

Staffing

We welcome Mrs Stewart back to school after maternity leave.

Prize Day

As classes have to stay in their bubbles, this year's Prize Day will be virtual on zoom for pupils only.

Sports Day

Given the current restrictions, each class will do their Sports Day separately led by Healthy Kidz. Unfortunately, we are unable to allow parents to attend. Medals will be awarded as usual.

Annual Reports for Year 1 to 7 and Nursery Transition Forms

Annual Reports will be posted 2nd class on Thursday 17th June 2021 and Nursery Transition Forms will be given to you directly by the Nursery Teacher on Friday 18th June 2021. As last year we do not require parents to sign and return a copy. If you have any queries about anything written in the Report, please do not hesitate to contact the Class Teacher.

First Holy Communion

Twenty- seven children from Year 4 made their First Holy Communion in St. John the Baptist Church on Saturday 22nd May. The ceremony was conducted by Very Rev. Canon Toner and all the children participated in the ceremony. This was a very different service again this year, but all of our pupils did really well and are to be congratulated.

Homework

This week was the last week of homework for this year. Thank you to all of the parents who have supported this very important part of your child's learning this year.

Induction Meetings- Nursery & Year 1

These will take place in June and parents will receive letters about this very soon. The format of induction will again be different due to the Covid restrictions.

Year 7 Post Primary Transfer

Parents will be informed which post primary school their child has got a place in on Saturday 19th June 2021.

Assessment

No standardised assessment was carried out this year due to the pandemic.

Attendance

Well done to the classes with the highest attendance for April:

Foundation/Key Stage 1: Year 1 – 99.2%

Key Stage 2: Year 5 McG – 94%

The LSC get a special mention because they had 100%

Covid-19 Reminders

Sickness/ Covid Symptoms

During this time, we would ask that pupils who are in any way unwell are kept at home. A reminder that pupils must not be sent to school if they are anyone in the household is displaying any of the three Covid-19 Symptoms and parents should follow the PHA guidance:

- High Temperature
- New continuous cough (this means coughing a lot for more than an hour or 3 or more coughing episodes in 24 hrs.)
- Loss of or change in sense of smell or taste

Face Coverings

Following Department of Education guidance, all parents entering the school grounds must now wear a face covering and I want to thank the vast majority of parents who are adhering to this policy. We would also encourage parents waiting to collect pupils outside the school grounds to wear a face covering.

Staggered Arrival Times

These remain unchanged with the morning arrival period of 30 minutes and 3 arrival windows and we would ask parents to stick strictly to these:

- 8.40am – 8.50am: A – G
- 8.50am – 9.00am: H – M
- 9.00am – 9.10am: Mc – Z

Reporting a Positive Covid-19 Case in one of our pupils

We ask that you inform the school immediately if one of our pupils receives a Confirmed Positive Covid-19 Test Result, if this is during office hours (8.15am – 4pm Monday – Thursday & 8.15am – 3.45pm on Fridays) phone the office on 02838352009.

If your child gets the positive test result out of school hours (evenings & weekends) it is important that we know as soon as possible so advice can be taken from PHA and action taken if necessary before schools starts the following day or on the Monday morning.

To allow us to do this we would ask that you please email us at: info@ballyoran.portadown.ni.sch.uk giving us the following information:

- Name of child
- Class
- When you received the test result
- The date that the pupil was last in school

Please note that this procedure is strictly only to be used to inform us of a confirmed positive case of Covid-19 in one of our pupils. All other reporting of absence, for example a pupil displaying symptoms of Covid-19 or other household members displaying symptoms, or positive test results for other members of the household, should be reported during school hours only.

Money Reminder

Thank you to everyone who sends all money into school in an envelope. Parents are reminded that teachers will no longer be accepting loose coins. All money coming into school must be the correct amount, in an envelope labelled with the child's name, the amount and what it is for. Also where there is more than one pupil in the school, a separate envelope should be sent for each item and each child. This complies with Covid restrictions and ensures teachers have more time for teaching. Thank you for your co-operation on this matter.

Car Parks/Parking

A reminder that the car parks must not be used for dropping off or collecting pupils. Parents and pupils are asked to refrain from entering the car park for Health and Safety reasons. Again, thank you to the vast majority of parents who respect this. Traffic congestion continues to be a problem in Ballyoran Park and we would ask that you respect local residents by parking sensibly. Please also respect other drivers and pupils. No-one should park on the yellow hazard lines or block the gates.

Zero Tolerance of Abuse to Staff Policy

Thankfully the vast majority of interactions between parents and staff are very positive and respectful, however unfortunately there have been a very small number of instances when school staff have been verbally abused by parents. The Board of Governors has a duty of care to staff and as a response to this they have recently adopted a new Policy – '*Zero Tolerance of Abuse to Staff*', which is available on the school website at <https://tinyurl.com/56vz39k3>

Nut Allergy Advice

A number of our pupils have a very serious nut allergy. These children can become very ill if exposed to nuts in any form. Even touching anyone/anything that has been in contact with nuts or nut products can cause a severe reaction. In order to protect these pupils, we are attempting to make the school a NUT FREE environment. We would therefore be grateful if all parents could ensure that their children do not come to school with nuts or any items containing nuts, e.g. snickers, peanut butter or nutella sandwiches, cashew/brazil/hazel nuts etc. We ask all parents to be particularly careful when preparing children's lunches. Thank you for your cooperation.

Fizzy Drinks

A reminder that as part of our Healthy Schools Policy, we do not permit pupils to bring fizzy drinks into school.

Healthy Breaks

Unfortunately, Healthy breaks have slipped since the lockdown.

A reminder that Nursery to Year 2 get a healthy snack provided by the school, Year 3 – 7 must bring in their own healthy snack. To help parents we have created a table of suitable and non-suitable healthy break snacks:

Suitable healthy break snacks	Not allowed at break
Pieces of fresh fruit	Any type of confectionery, eg chocolate products and sweets
Fruit pots of sliced or chopped fresh fruit	Crisps and crisp-like products such as tortilla chips, potato sticks, corn chips, prawn crackers, puff crackers
Canned fruit in natural juice	Cakes, buns or pastries
Salad pots	Cereal or fruit bars
Raw vegetables such as tomatoes, carrots, celery, peppers and cucumber	All biscuits
Bread, pancakes or scones with a thin spread of margarine	Fizzy drinks
Breadsticks or crackers with cheese	Dried fruit that has been sugared or coated in yogurt or chocolate
Sandwiches, bagels, baguettes, pitta bread, tortilla wraps or rolls	Pretzels
Yogurts	Nuts

All parents are asked to adhere to Our Healthy Breaks Policy.

School Attendance – Every School Day Counts

Every single day a child is absent from school equates to a day of lost learning. Sometimes attendance percentages can be misleading. As a whole school we would like your cooperation in improving our rate of attendance and in turn reducing the days of lost learning. Please note that rates of attendance are reviewed monthly with the Educational Welfare Office (EWO) and those children falling below 85% are automatically referred to the EWO for intervention. Thank you for your help in this matter. The Department of Education booklet '**School Attendance Matters - A Parent's Guide**' is available on the school website and from the Office.

100% Attendance	0 Days Missed	Excellent
95% Attendance	9 Days of Absence 1 Week and 4 Days of Learning Missed	Satisfactory
90% Attendance	19 Days of Absence 3 Weeks and 4 Days of Learning Missed	Poor
85% Attendance	28 Days Absence 5 Weeks and 3 Days of Learning Missed	Very Poor
80% Attendance	38 Days of Absence 7 Weeks and 3 days of Learning Missed	Unacceptable
75% Attendance	46 Days of Absence 9 Weeks and 1 Day of Learning Missed	Unacceptable

Due to Department of Education Guidelines, a present mark can only be given if a pupil is in school. Just as Attendance is important, Punctuality is also very important.

School Website

Please keep up to date with what is going on in school by visiting our website on www.ballyoranps.com

Sun Safety in School

If the good weather ever does arrive, it is incredibly important that children bring a hat in to school every day. We also ask that all children wear sun cream to school which is applied before they arrive in the morning as this offers protection during the school day. Finally, pupils should have water with them in non-spill bottles.

Stay Safe and Stay Out Campaign

As we approach the summer we have again been asked by the Health and Safety Executive for Northern Ireland to bring to your attention the dangers of children going near quarries.

The potential hazards that people expose themselves to are:

- Swimming in quarry lakes that can have very cold water even on a hot day in the middle of summer. Strong swimmers have drowned in quarries due to the unexpected impact that the extreme cold has had on their bodies.
- The water in quarry lakes can be very deep and shelving, exit from the water may only be possible in a few places, there may be pumps working or currents that can drag you under the water.
- There can be concealed underwater obstructions and other hazards that can seriously injure swimmers or individuals jumping into the water – tombstoning into quarry lakes is not safe.
- Tunnelling into piles of sand or playing on stockpiles exposes you to the risk of sudden collapses or movements that can easily bury you.
- Walking near the edge of quarry faces exposes you to the risk of serious falls as the edges can be unstable and collapse unexpectedly or sheer faces be obstructed by vegetation.
- Climbing or walking near rock faces can expose you to the risk of rock falls.
- Surfaces in quarries that may look solid, such as the surface of a silt pond, can suddenly break and act like quick sand sucking you down.
- Trail and quad biking in a quarry exposes riders to risks from unstable terrain, unexpected obstructions and being hit by moving plant.
- Young people on bikes or on foot may not be visible to operators of large machinery, they may not appreciate that the driver cannot see them.
- Quarries can often be located in remote sites where mobile reception is poor and there is no one on hand to help in the event of an accident.

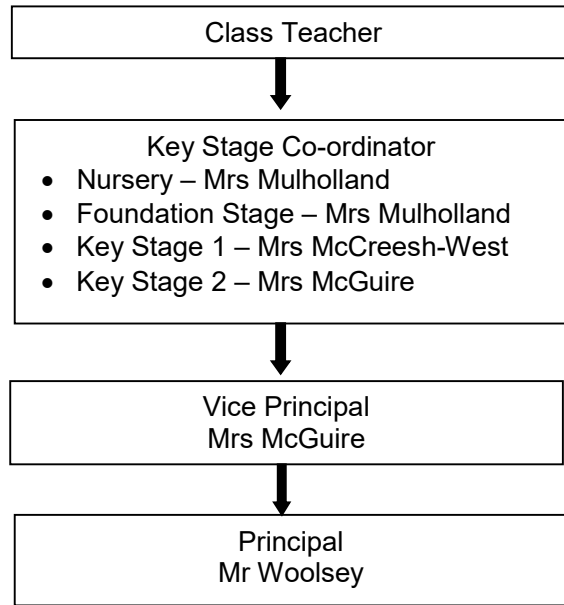
Pupil Data Collection form

During the month of June, you will receive a blank pupil data collection form in preparation for next year, we ask that you complete this and return it to school before the 18th June.

General Queries / Concerns

At Ballyoran Primary School we believe in a strong partnership with parents and communication between home and school is a vital part of this. DE guidance currently does not permit face to face meetings but staff will be very happy to talk to you on the phone. Please contact the office to arrange a suitable time. We would

encourage you to follow the flow chart below when raising general queries / concerns:



Picking Pupils Up

It is vital that parents are punctual when collecting their children otherwise they get anxious. If you are running late we would ask that you phone the office and inform us of this. If a child is not collected and we are unable to make contact with parents/carers we have no option but to phone Social Services and/or the Police.

Emergency Contact Details

It is vitally important that we hold up to date emergency contact details for our pupils. Some parents are still not informing us when they change their mobile phone numbers. This is unacceptable and leaves us in a very difficult position if for example we needed to contact you if your child was seriously ill. I cannot stress the importance of this enough, please keep us up to date. Again as with late pick up, if we are unable to contact a parent/carer in the event of an emergency we will have no option but to refer this to Social Services.

School Uniform

Can I ask that all parents ensure their children are in the proper school uniform right up to the end of term. Unfortunately, uniform standards have slipped this year.

Menu for June 2021

<https://tinyurl.com/h6mv9ecj>

Richard Woolsey
Principal